



3 4 2 2

Baltimore Mk2

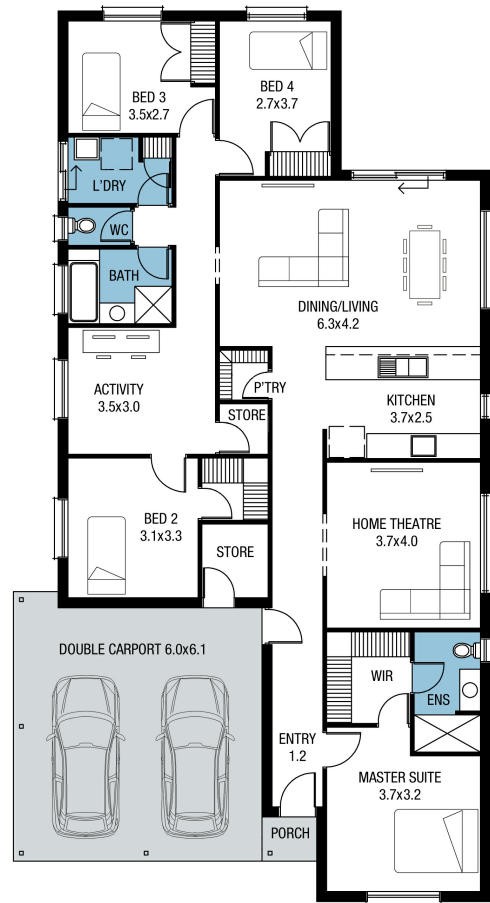
Lot 49
Wisteria Grove 'Eden'
Two Wells

BLOCK SIZE: 900m²
HOUSE SIZE: 211m²

HOUSE & LAND PACKAGE
\$378,000*

PACKAGE INCLUSIONS:

- FREE 6.5kw Solar Panel System
- \$10,000 Land Discount
- Ducted Reverse Cycle Air Conditioner
- \$10,000 House Discount
- 2.7m Ceilings
- 25-degree Roof Pitch
- Frontage 6, as pictured
- Carpet flooring to Bedrooms
- Timber Laminate flooring to remainder
- Single-span Panel Lift Door & Auto Unit to Garage
- Overhead Cupboards to Kitchen, incl. over fridge
- Rainwater Bypass System
- Stormwater Allowance
- Fully-cabled NBN
- Dishwasher Provision
- Colorbond Roof
- Highly Upgraded Insulation throughout
- Generous Siteworks & Footings Allowance
- 3 Months Maintenance
- 25 Year Structural Guarantee & much more



ENQUIRIES: Dominic Weakley M: 0449 514 059 E: dominicw@sahousingcentre.com.au

*Conditions apply. Certain elevations may not match the particular floor plan published in this package and, as such, all floor plans and elevations are for illustration purposes only. Land subject to availability. We make no representation and, to the extent permissible at law, we disclaim all liability, as to the suitability of the land to build on, or the suitability of any house design, or otherwise. You must satisfy yourself of that by inspection, or by taking professional advice, or otherwise. Pricing is indicative only and based on standard costings. Price may vary depending on selections, engineering, council and utility req