



3 4 2 2

Dorchester Alfresco

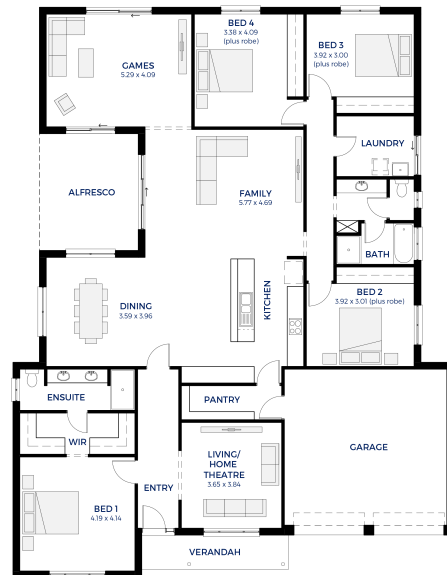
**Lot 56
Wisteria Grove 'Eden'
Two Wells**

**BLOCK SIZE: 900m²
HOUSE SIZE: 292m²**

**HOUSE & LAND PACKAGE
\$460,250***

PACKAGE INCLUSIONS:

- Double Garage, single panel lift door & concrete slab
- Carpet to bedrooms & living
- Wooden floating floors to the remainder
- Ducted reverse cycle air conditioning
- Choice of elevations
- Generous footings allowance
- Colourbond roof included
- 25 year structural guarantee
- 2.7m high ceilings
- Westinghouse stainless steel appliances
- NBN connection
- Overhead cupboards to kitchen
- Plenty of laundry storage
- Alfresco Living!



ENQUIRIES: Adrian Zajac M: 0421 720 611 E: adrianz@hickinbotham.com.au

*Conditions apply. Certain elevations may not match the particular floor plan published in this package and, as such, all floor plans and elevations are for illustration purposes only. Land subject to availability. We make no representation and, to the extent permissible at law, we disclaim all liability, as to the suitability of the land to build on, or the suitability of any house design, or otherwise. You must satisfy yourself of that by inspection, or by taking professional advice, or otherwise. Pricing is indicative only and based on standard costings. Price may vary depending on selections, engineering, council and utility requirements and adjustments to allowances. All packages subject to final council approval. Alan Hickinbotham Pty Ltd ABN 13 007 567 222, RLA 230557, Construction Services Australia Pty Ltd ABN 99 007 641 787, Building Licence G8969.

Hickinbotham