



3 4 2 2

Amesbury Alfresco

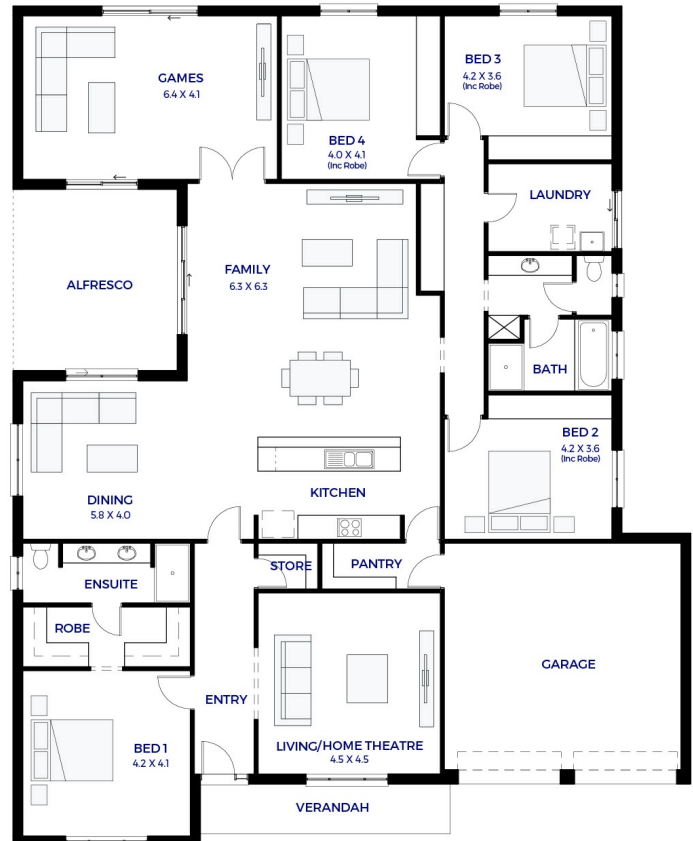
LOT 60
Wisteria Grove 'Eden'
Two Wells

BLOCK SIZE: 900m²
HOUSE SIZE: 320.62m²

HOUSE & LAND PACKAGE
\$426,183*

PACKAGE INCLUSIONS:

- FREE SOLAR
- LOVELY FAMILY HOME
- CHOICE OF FRONT ELEVATIONS
- FLEXIBLE FLOORPLAN
- IN HOUSE FINANCE AVAILABLE
- Double Garage & auto lift door
- Dishwasher provision
- FREE dishwasher
- NBN Provision & cabling
- 1200mm high tiling (bathroom & ensuite) & 3 rows of tiles over kitchen
- Keylocks to sliding windows
- Termite protection
- Instantaneous hot water system
- Ducted reverse cycle heating & cooling air conditioning
- Flooring- carpet to bedrooms, timber laminate to remainder
- Expansive Living & Meals area
- Separate Home theatre
- Master with WIR & Ensuite



ENQUIRIES: Nicole Allom M: 0416 843 392 E: nicolea@hickinbotham.com.au

*Conditions apply. Certain elevations may not match the particular floor plan published in this package and, as such, all floor plans and elevations are for illustration purposes only. Land subject to availability. We make no representation and, to the extent permissible at law, we disclaim all liability, as to the suitability of the land to build on, or the suitability of any house design, or otherwise. You must satisfy yourself of that by inspection, or by taking professional advice, or otherwise. Pricing is indicative only and based on standard costings. Price may vary depending on selections, engineering, council and utility requirements and adjustments to allowances. All packages subject to final council approval. Alan Hickinbotham Pty Ltd ABN 13 007 567 222, RLA 230557, Construction Services Australia Pty Ltd ABN 99 007 641 787, Building Licence G8969.

Hickinbotham